

# TransAID

The logo for TransAID features the word "Trans" in a grey sans-serif font and "AID" in a blue sans-serif font. The letter "A" is replaced by a blue 3D trapezoidal shape with a white antenna-like structure on top, emitting three curved lines representing signal waves. Below the text are two horizontal bars: a grey one on top and a blue one on the bottom, both with a slight 3D effect and a shadow.

**City&Lab is not a project, but a way of cooperating and sharing – a collaboration concept with a shared portfolio of projects with a common goal;**

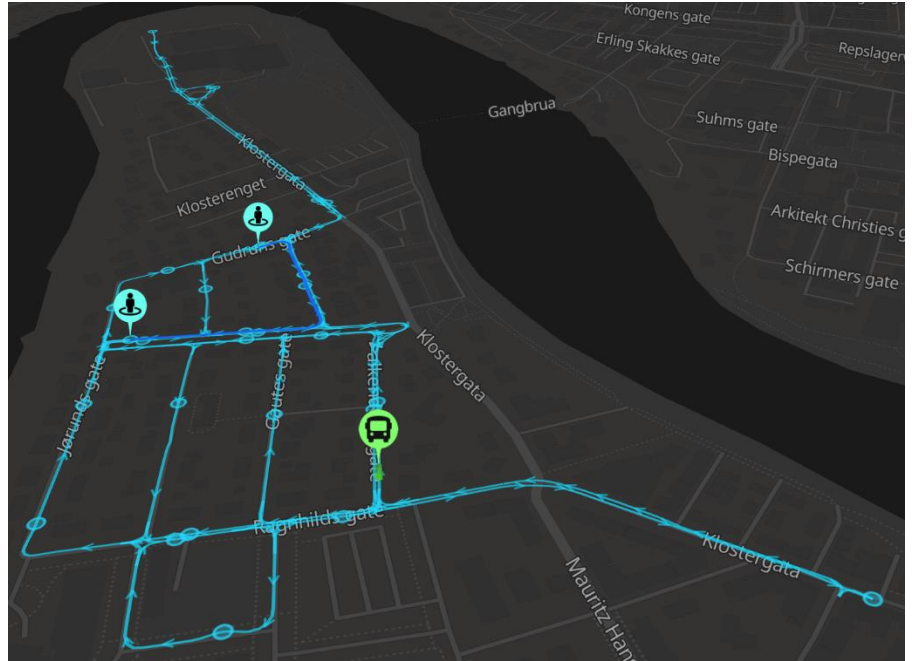
# Solutions must be scalable



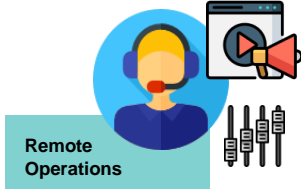
**technology is not a goal in itself, but seen as a tool to develop sustainable mobility.**

# INTERNATIONAL TEAMWORK

## First large scale on demand service



# Smart Fleet Management



Remote Operations

Customized App



Customized Dashboard



Fleet Management

Safety operators

Dashboard

Roadside



Sensorer

Dynamical on vehicles



Date	Count	Type	Vehicle
2019-10-21	3	PASSENGER_COUNT_FREE_RETIRED	G2-038
2019-10-21	4	PASSENGER_COUNT_FREE_RETIRED	G2-039
2019-10-21	1	PASSENGER_COUNT_FREE_TRANSFER	G2-038
2019-10-21	1	PASSENGER_COUNT_FREE_TRANSFER	G2-038
2019-10-21	1	PASSENGER_COUNT_FREE_TRANSFER	G2-039

Real data for public transport

Public Transport

Weather Status  
Road status

Public road owners

Autonomous Sweepers

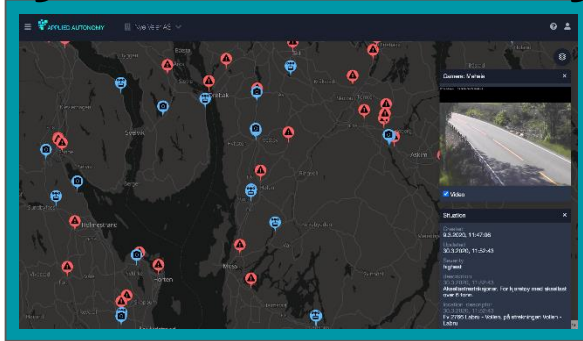


Autonomous vehicles



Vehicles

# Flexibility and scalability

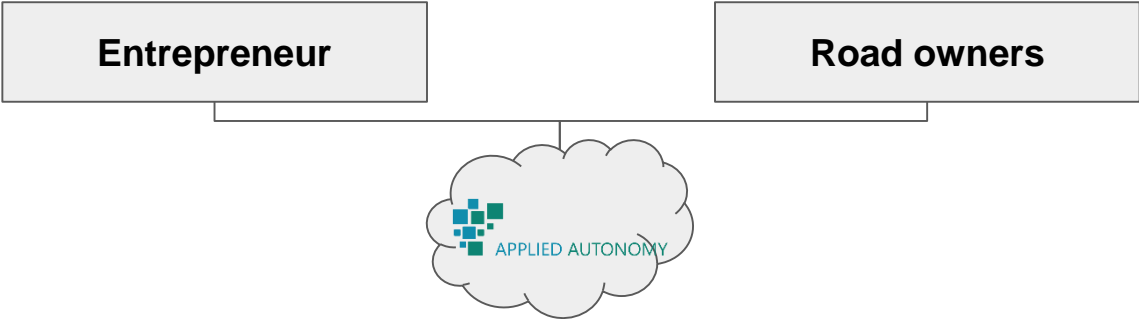


## Scalability

- Many locations
- Many types of vehicles
- Many types of sensors and open data is integrated
- API and monitors is provided at different level of Smartness in our platform
- Optimization
- Data sharing
- many additional functions like geofence, 5G services and messaging (V2X)



# Collect and share critical information



SHARE

ROADS

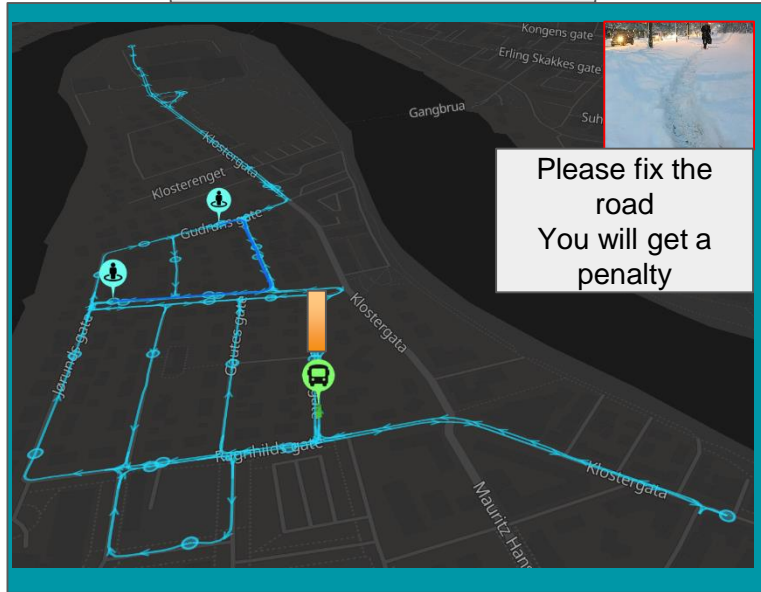
INSIGHTS

TAKE ACTIONS

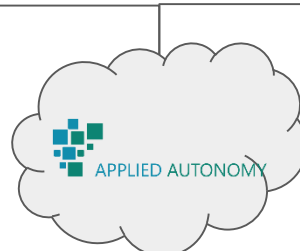
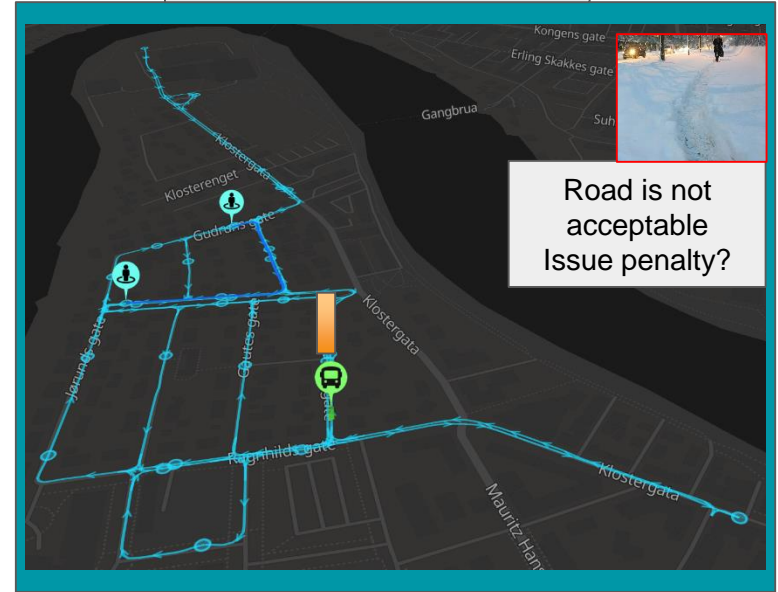
# and provide alerts



Entrepreneur



Road owners



# CONNECTED AUTONOMOUS VEHICLES



**No special traffic regulation is needed**

## Trajectory

1. 4,4 kilometer
2. 2 vehicles
3. mixed traffic
4. 15% steep climbs

**total cost of ownership of road infrastructure goes down**

